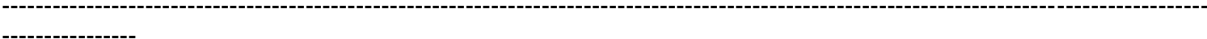


# Blanking Panels, Cable Entry Panels, Frames



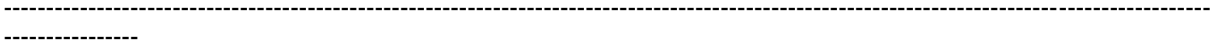
**RAB-ZP-X03-A1, RAC-ZP-X03-A1**  
19" 1U Cable entry panel

- **Supply**
- Screw M6 x 10 ..... 4x
- Plastic washer ..... 4x
- Captive nut M6 ..... 4x



**RAB-ZP-X03-A2, RAC-ZP-X03-A2**  
19" 1U Cable entry panel with brush strip

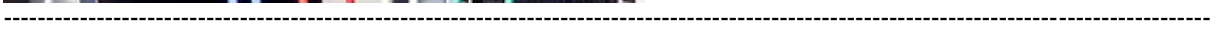
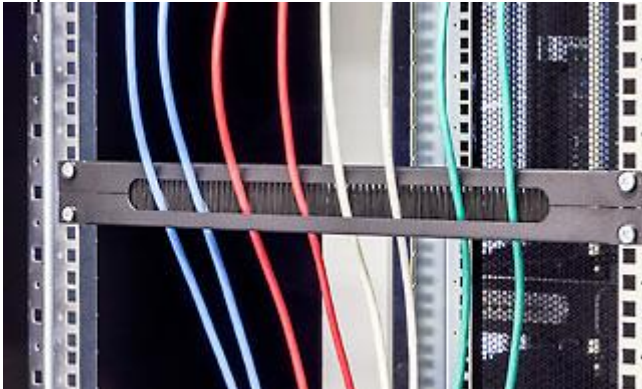
- **Supply**
- Screw M6 x 10 ..... 4x
- Plastic washer ..... 4x
- Captive nut M6 ..... 4x



**RAB-ZP-X03-A3, RAC-ZP-X03-A3**

19" 1U Cable entry panel divided horizontally, with brush, opening size 350 x 21 mm.

- **Supply**
- Screw M6 x 10 ..... 4x
- Plastic washer ..... 4x
- Captive nut M6 ..... 4x

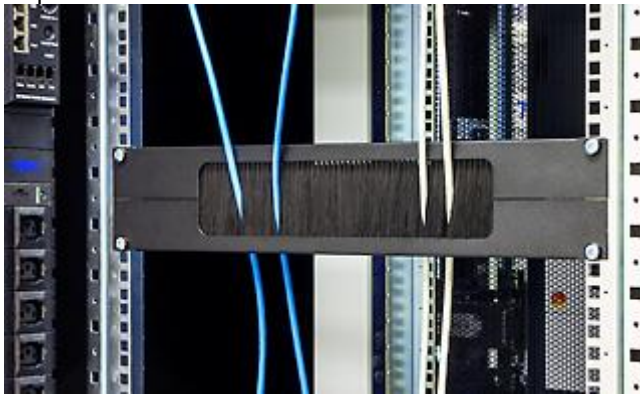




**RAB-ZP-X02-A3, RAC-ZP-X02-A3**

19" cable entry panel 2U divided horizontally, with brush, opening size 330 x 55 mm.

- **Supply**
- Screw M6 x 10 ..... 4x
- Plastic washer ..... 4x
- Captive nut M6 ..... 4x



-----  
-----

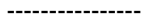
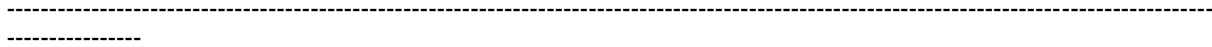


**RAB-ZP-X0x-A1, RAC-ZP-X0x-A1**

19" Blanking panel

Type	Height (mm)	Height (U)
<b>RAx-ZP-X01-A1</b>	44	1
<b>RAx-ZP-X02-A1</b>	88	2
<b>RAx-ZP-X04-A1</b>	133	3
<b>RAx-ZP-X05-A1</b>	177	4

- **Supply**
- Screw M6 x 10 ..... 4x
- Plastic washer ..... 4x
- Captive nut M6 ..... 4x



**RAB-ZP-X3x-A1, RAC-ZP-X3x-A1**

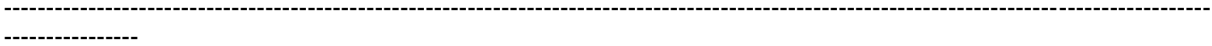
19" Blanking panel 1U with plastic pins

**RAB-ZP-X9x-A1, RAC-ZP-X9x-A1**

19" Blanking panel 1U with plastic pins - logo Tritón

Type	Height (U)	Plastic pins
<b>RAx-ZP-Xx1-A1</b>	1	2
<b>RAx-ZP-Xx2-A1</b>	2	4
<b>RAx-ZP-Xx3-A1</b>	3	4
<b>RAx-ZP-Xx4-A1</b>	4	4
<b>RAx-ZP-Xx5-A1</b>	5	4

- **Supply**
- for 1U - plastic pins ..... 2x
- for 2U and further ..... 4x

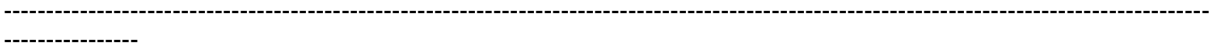


**RAX-ZP-X4x-A1, RAC-ZP-X4x-A1**

19" perforated blanking panel

Type	Height (U)	Plastic pinsk
RAX-ZP-X41-A1	1	2
RAX-ZP-X42-A1	2	4
RAX-ZP-X43-A1	3	4
RAX-ZP-X44-A1	4	4
RAX-ZP-X45-A1	5	4

- **Supply**
- for 1U - plastic pins ..... 2x
- for 2U and further - plastic pins ..... 4x



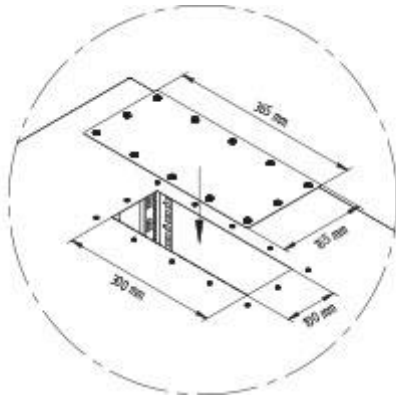


**RAB-ZP-P41-A1, RAC-ZP-P41-A1**  
19" blanking panel 1U oval perforation 36 x 6 mm

- **Supply**
- Screw M6 x 10 ..... 4x
- Plastic washer ..... 4x
- Captive nut M6 ..... 4x



**RAX-PB-X01-X1**  
Cable entry for RIE/RDE.



### Plastic pins



RAX-MS-X17-X1, RAX-MS-X18-X1

- **RAX-MS-X17-X1**
- – plastic frame for a breakout-type blanking panel 300 x 70 mm
- **RAX-MS-X18-X1**
- – plastic frame for a breakout-type blanking panel 370 x 90 mm

Openings with breakout-type blanking panels fixed with several bonds are intended for cables entering into a cabinet. After breaking-out the blanking panel, sharp edges sometimes remain. They can damage a cable or injure the operator. To eliminate this imperfection, we have developed a plastic frame.

The frame is to be fixed into the breakout by a simple click and it is included in every 19" cabinet supply.

We make the frames in two sizes – for wall-mounted and free-standing cabinets.

**The plastic frame can be completed with a blanking panel with a brush (RAX-MS-X15-X1, RAX-MS-X16-X1) which is also included in the supply.**







---

#### **RAX-MS-X15-X1, RAX-MS-X16-X1**

##### **RAX-MS-X15-X1**

– blanking panel with a brush, 370 x 90 mm

##### **RAX-MS-X16-X1**

– blanking panel with a brush, 300 x 70 mm

---



#### **RAB-PB-X10-X1, RAC-PB-X10-X1**

Cable opening with plastic foam padding. It is designed into the mounting holes for fan units, Triton standing cabinets or directly to the data center's raised floors, after cutting out a mounting hole with sizes 350 x 420 mm.

